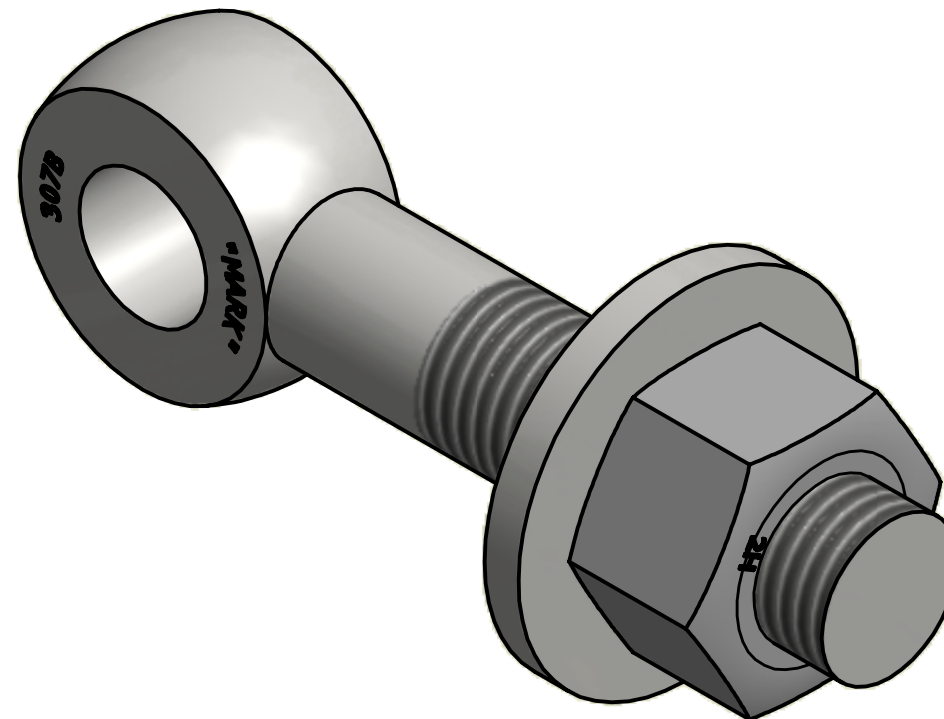
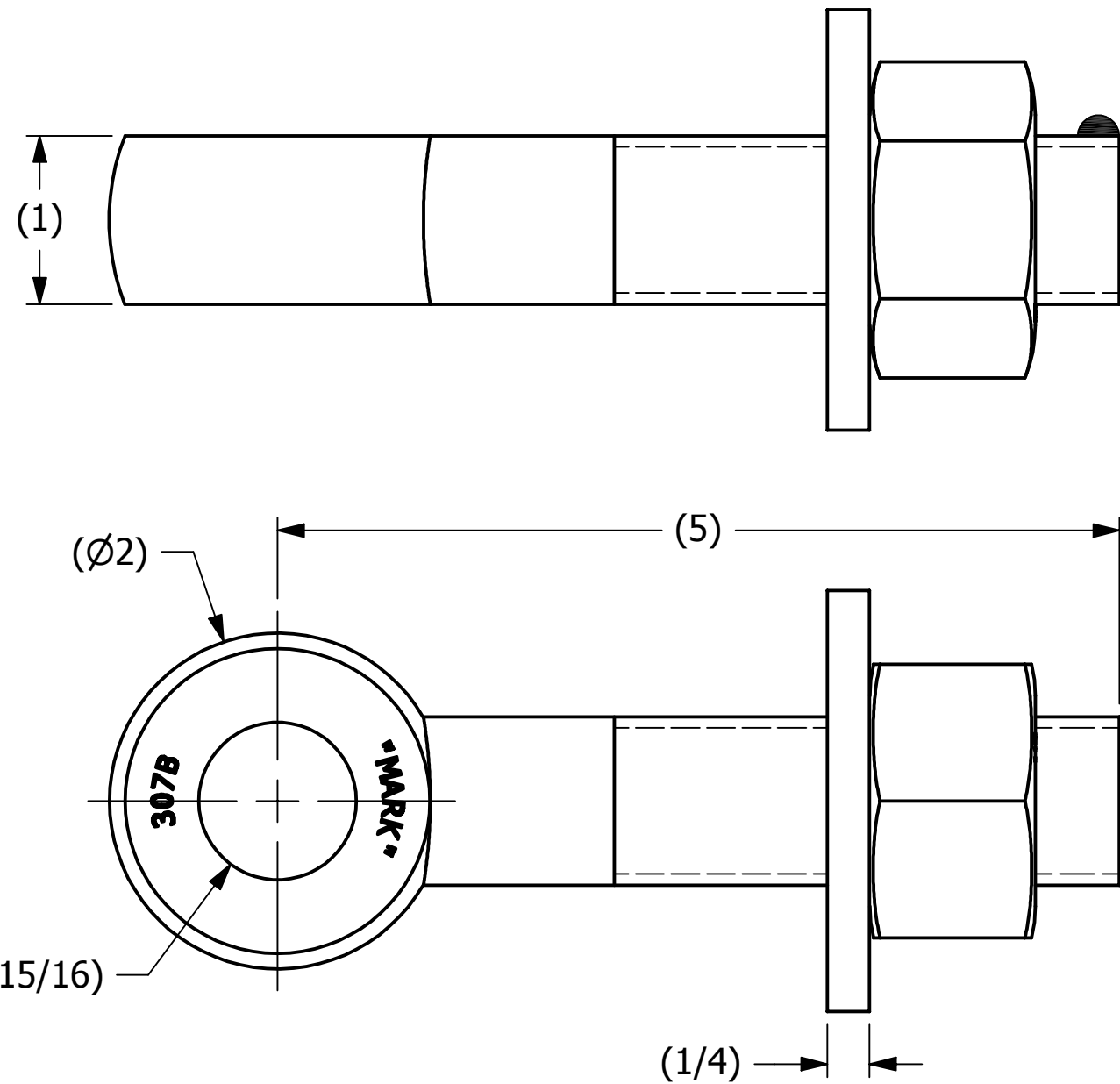


SALES DRAWING

SALES DRAWING



ISOMETRIC VIEW

REV	BY	DATE	DESCRIPTION
E	RJP	3-2-16	WASH1PT WAS WASH1P, UPDATED TITLE BLOCK
D	CHL	9-17-10	CHANGED EYEBOLT MATERIAL
C	CHL	4-25-01	REPLACED WASH1 W/WASH1P
B	FOD	8-4-99	UPDATED BOM, ITEM #1 WAS EB15
A	FOD	5-10-99	PLACED BOM & NEW TITLEBLOCK

<small>UNLESS OTHERWISE SPECIFIED DIMENSIONAL TOLERANCES</small> FRACTIONAL: $\pm 1/16$ X.XX: $\pm .03$ X.XXX: $\pm .015$ ANGULAR: $\pm 1^\circ$ <small>DEBURR ALL SHARP EDGES. ALL MACHINED SURFACES TO HAVE A 125 RMS FINISH UNLESS NOTED OTHERWISE.</small>	DRAWN BY:	TJN
	CHECKED BY:	
	PROTOTYPE BY:	TJN
	PROTOTYPE DATE:	1/29/1993
<small>THIRD ANGLE PROJECTION</small> 	APPROVED FOR PRODUCTION BY:	TJN
	PRODUCTION DATE:	1/29/1993

PART NAME: EYEBOLT ASSEMBLY 1"X5"		
MATERIAL: CARBON STEEL		
PROJECT #:	SHEET #: 1 OF 1	SCALE: 1:1
DRAWING #: B5365	PART #: EB15XA	

THIS PRINT, PROPERTY OF SALCO PRODUCTS INC., CONTAINS PROPRIETARY INFORMATION AND MUST NOT BE COPIED, REPRODUCED, OR USED DETRIMENTALLY TO OUR INTEREST.